

DSUB SV MA IDC 25P AU2 NUT 4-40

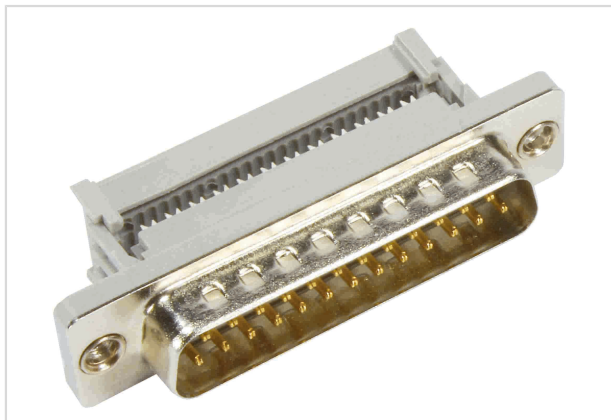


Image is for illustration purposes only. Please refer to product description.

Part number	09 66 328 6702
Specification	DSUB SV MA IDC 25P AU2 NUT 4-40
HARTING eCatalogue	https://b2b.harting.com/09663286702

Identification

Category	Connectors
Series	D-Sub
Identification	Standard
Element	Connector
Description of the contact	Stamped Straight

Version

Termination method	IDC insulation displacement termination
Gender	Male
Size	D-Sub 3
Connection type	PCB to cable Cable to cable
Number of contacts	25
Locking type	Fixing flange with thread 4-40 UNC

Technical characteristics

Conductor cross-section	0.09 ... 0.13 mm ²
Conductor cross-section	AWG 28 ... AWG 26
Rated current	2 A
Clearance distance	≥0.7 mm
Creepage distance	≥0.7 mm
Insulation resistance	>10 ¹⁰ Ω
Contact resistance	≤10 mΩ



Pushing Performance
Since 1945

Technical characteristics

Tightening torque	≤0.6 Nm Female screw lock
Limiting temperature	-55 ... +125 °C
Insertion force	≤83 N
Withdrawal force	≥7.8 N ≤56 N
Performance level	2 acc. to CECC 75301-802
Mating cycles	≥250
Test voltage $U_{r.m.s.}$	1 kV
Hot plugging	No

Material properties

Material (insert)	Thermoplastic resin, glass-fibre filled (PBTP) Shell: Plated steel
Colour (insert)	Black
Material (contacts)	Copper alloy
Surface (contacts)	Noble metal over Ni
Material flammability class acc. to UL 94	V-0
RoHS	compliant with exemption
RoHS exemptions	6(c): Copper alloy containing up to 4 % lead by weight
ELV status	compliant with exemption
China RoHS	50
REACH Annex XVII substances	Not contained
REACH ANNEX XIV substances	Not contained
REACH SVHC substances	Yes
REACH SVHC substances	Lead
ECHA SCIP number	5f2b96e8-feaf-4131-b3cd-8b723c130d93
California Proposition 65 substances	Yes
California Proposition 65 substances	Lead

Specifications and approvals

Specifications	DIN 41652
UL / CSA	UL 1977 ECBT2.E102079



Pushing Performance
Since 1945

Commercial data

Packaging size	100
Net weight	13.2 g
Country of origin	China
European customs tariff number	85366990
GTIN	5713140083806
eCl@ss	27440214 D-Sub coupler